

**Electronic Accessories**
**Cable (Interface)**

8120-8485	Universal Serial Bus (USB) interface cable - Type 'A' connector to type 'B' connector, 1.8m (6.0 ft) long
8121-0712	Universal serial bus (USB) interface cable - Type 'A' connector to type 'B' connector - 0.6m (24-inches) long
C2950A	IEEE-1284 Bi-Tronics parallel cable - DB-25 (M) connector (type A) to 36 pin Centronics (M) connector (type B) - 2.0m (6.6ft) long
5063-1256	<i>New Part for C2950A</i>
C2951A	IEEE-1284 Bi-Tronics parallel cable - DB-25 (M) connector (type A) to 36 pin Centronics (M) connector (type B) - 3.0m (9.8ft) long

**Interface**

J6035-61021	JetDirect 175X print server
J6035-61031	<i>New Part for J6035-61021</i>

**Electronics/Power Cords**
**Cable**

6	RG0-1097-000CN	4-wire cable assembly - Connects between the laser/scanner assembly and the formatter PC board
7	RH2-5594-000CN	Flex ribbon cable assembly - Has two 10 pin (M) edge connectors - Connects between the laser/scanner assembly and the formatter PC board

**Fan/Airflow Guide**

8	RG0-1030-000CN	Fan and airflow guide assembly - Mounts to the upper front on the right side plate
---	----------------	--

**LED**

10	RG0-1167-000CN	LED status panel assembly (or control panel) - Plastic front cover support with two LED's - Mounts on the upper left corner of the left side plate
----	----------------	--

**Laser/Scanner**

9	RG9-1486-000CN	Laser/scanner assembly - Mounts on top of the print structure frame
---	----------------	---

**PC Board**

11	Q2678-67901	Formatter PC board - Includes connectors for the USB and parallel ports - Mounts on the left side plate
12	RG0-1166-020CN	Engine control PC board - Control and power supply board for the printer (For 220V to 240V operation) - Mounts in the bottom of the printer

**Power Cord**

8120-8707	Power cord (Flint Gray) - 17 AWG, 2.3m (7.5ft) long - Has straight (F) receptacle (For 220V in China)
8121-0516	Power cord (Flint Gray) - 18 AWG, 1.9m (6.25ft) long - Has straight (F) receptacle (For 220V in Europe)
8121-0517	Power cord (Flint Gray) - 18 AWG, 1.9m (6.25ft) long - Has straight (F) receptacle (For 240V in the UK, Hong Kong, Singapore, and Malaysia)
8121-0518	Power cord (Flint Gray) - 18 AWG, 1.9m (6.25ft) long - Has straight (F) receptacle (For 220V in Denmark)
8121-0519	Power cord (Flint Gray) - 18 AWG, 1.9m (6.25ft) long - Has straight (F) receptacle (For 220V in Switzerland)
8121-0520	Power cord (Flint Gray) - 18 AWG, 1.9m (6.25ft) long - Has straight (F) receptacle (For 240V in India)
8121-0780	Power cord (Flint Gray) - 17 AWG, 2.3m (7.5ft) long - Has straight (F) C13 receptacle (For 240V in India)

**Sensor**

20	RG0-1072-000CN	Paper sensor PC board - Small board with optical flag sensor (Flag not included) - For sensing leading edge of paper - Mounts on the paper feed assembly in the paper pick-up assembly
21	RG0-1082-000CN	Delivery sensor PC board - Small board with optical flag sensor (Flag not included) - For sensing paper output - Mounts on the bottom center of the fusing assembly

**Solenoid**

22	RH7-5315-000CN	24VDC Solenoid - Engages the pick-up roller gear/clutch assembly - Mounts on the right side plate assembly
----	----------------	--

**Spring**

23	RA0-1035-000CN	Torsion spring - Provides high voltage connection to the toner cartridge (developing cylinder) - Mounts between the paper pickup roller and the transfer roller on the left side of the paper pickup assembly
24	RA0-1200-000CN	Torsion spring - Provides high voltage connection to the toner cartridge (primary charging roller) - Mounts behind the transfer roller on the left side of the paper pickup assembly

**External Case Parts****Cover**

- 25 RA0-1177-000CN Front cover - Lower front of printer - With opening for inserting the paper input tray assembly
- 26 RA0-1178-000CN Right side cover assembly - Has molded-in air intake louvers
- 27 RA0-1179-000CN Left side printer cover - Covers the USB and parallel port Connectors (On the formatter board)
- 28 RA0-1183-000CN Connector cover - Small rectangular plastic cover - Mounts on top of the left side cover (Unused slot)
- 29 RG0-1016-000CN Rear cover assembly - Includes rear cover and fold down face-up (or straight through) paper output tray (Tray is NOT sold separately)
- 30 RG0-1017-020CN Top cover assembly - Has face-down paper output tray molded into it - Mounts to top of printer

**Door**

- 31 RG0-1163-000CN Toner cartridge door - Fold down door used when accessing the toner cartridge - Mounts to the top of the front cover

**Foot**

- 32 RA0-1003-000CN Rubber foot - Used for the rear feet on the bottom of printer - Mounts on the front bottom frame of the paper pick-up assembly (two used)
- 33 RA0-1197-000CN Rubber foot - Used for the front feet on the bottom of the printer - Mounts on the bottom of the right and left side plate assemblies (two used)

**Nameplate/Logo**

- 34 7121-8042 HP logo (jewel) - For HP LaserJet series printers - Mounts to the toner cartridge door

**Pan**

- 35 RA0-1127-000CN Support pan (case) for the print engine controller board - Metal pan which also acts as part of the bottom of the printer

**Fusing Assembly Parts****Bushing**

- 36 RA0-1104-000CN Roller bushing/retainer - Mounts on the right end of the face-up output roller and retains it in the fusing assembly

**Fusing Assembly**

- 37 RG9-1494-000CN Fusing assembly - Bonds toner to paper with heat (For 220V to 240V operation) - Mounts in the upper rear of the printer

**Gear**

- 38 RA0-1088-000CN 29 tooth gear - Mounts on the end of the pressure roller - Largest of the three gears on the fusing assembly
- 39 RA0-1089-000CN 17 tooth gear - Mounts on the end of the face-up output roller - Center gear of three gears on the fusing assembly

**Roller**

- 40 RF0-1003-000CN Face-up (straight through) output roller - Metal shaft with two rollers - Mounts in the fusing assembly behind the pressure roller

**Roller Assembly**

- 41 RG0-1010-000CN Output roller assembly - Includes face-down delivery roller, 4 spring-loaded pressure rollers, support frame, and drive gear - Delivers printed pages to the output tray on top of the printer - Mounts on the top rear of the fusing assembly

**Sensor**

- 42 RG0-1082-000CN Delivery sensor PC board - Small board with optical flag sensor (Flag not included) - For sensing paper output - Mounts on the bottom center of the fusing assembly

**Other Accessories****Cartridge**

- C7115A Ultraprecise black toner cartridge - Will print approximately 2,500 pages based on a 5% print density
- C7115X Ultraprecise black toner cartridge - Will print approximately 3,500 pages based on a 5% print density

**Cleaning Supplies**

- 5090-3379 Toner cleaning cloth - Specially treated cloth for absorbing toner (1 per package) - Ideal for cleaning up toner spills

**Film (Transparency)**

- 92296T LaserJet printer transparency film - A size (8.5 x 11-inches) - 50 sheets per box

**Other Accessories****Manual**

Q2676-90901	Quick start guide for the LaserJet 1005 series printer (English, French, German, Italian, Spanish, Dutch, Portuguese, Greek, and Arabic)
Q2676-90902	Quick start guide for the LaserJet 1005 series printer (English, Danish, Finnish, Norwegian, Swedish, Estonian, Latvian, Lithuanian, and Hebrew)
Q2676-90903	Quick start guide for the LaserJet 1005 series printer (English, Polish, Hungarian, Czechoslovakian, Slovakian, Slovenian, Croatian, and Romanian)
Q2676-90904	Quick start guide for the LaserJet 1005 series printer (English, Russian, Kazakh, Ukrainian, Bulgarian, and Turkish)
Q2676-90905	Quick start guide for the LaserJet 1005 series printer (English and Simplified Chinese)
Q2676-90906	LaserJet 1005 series printer users guide (English)
Q2676-90907	LaserJet 1005 series printer users guide (French)
Q2676-90908	LaserJet 1005 series printer users guide (German)
Q2676-90909	LaserJet 1005 series printer users guide (Italian)
Q2676-90910	LaserJet 1005 series printer users guide (Spanish)
Q2676-90911	LaserJet 1005 series printer users guide (Finnish)
Q2676-90912	LaserJet 1005 series printer users guide (Russian)
Q2676-90913	LaserJet 1005 series printer users guide (Simplified Chinese)
Q2676-90915	LaserJet 1005 series printer service manual

**Protector**

Q1299A	Sheet protectors - 4mm (0.16in) thick polypropylene sheet protectors for 'A' size (8.5-inches x 11-inches) documents - Has top and side openings for easy insertion and removal of documents - 50 sleeves per box NO LONGER SUPPLIED
Q1299B	Sheet protectors - 4mm (0.16in) thick polypropylene sheet protectors for 'A4' size (210mm x 297mm) documents - Has top and side openings for easy insertion and removal of documents - 50 sleeves per box NO LONGER SUPPLIED

**Screw**

63	RY7-5082-000CN	Screw kit - Includes nine bags of different size screws - This is a complete set of screws for the LaserJet 1005 series printer
----	----------------	---

**Other Internal Parts****Bracket**

64	RA0-1185-000CN	Left side fuser bracket ('L' Shaped) - Provides mounting support for the fusing assembly - Mounts to the upper rear corner of the left side plate
65	RA0-1186-000CN	Right side fuser bracket ('L' Shaped) - Provides mounting support for the fusing assembly - Mounts to the upper rear corner of the right side plate

**Clamp**

66	WT2-5694-000CN	Snap-in cable clamp - Secures the drive motor cable from the controller PC board to the metal support pan
----	----------------	---

**Gear**

67	RA0-1176-000CN	69 tooth gear - Large gear with ribs and six small holes - Mounts on on a rod in the upper rear corner of the right side plate
----	----------------	--

**Gear Assembly**

68	RA0-1172-000CN	17 tooth gear assembly - Includes the 17 tooth gear mounted on a black plastic bracket - Mounts to the right side plate assembly
69	RG0-1020-000CN	Gear/clutch assembly (Solenoid activated) - Includes the two gear bodies and internal spring - Drives the pickup roller in the paper pickup assembly

**Guide**

70	RA0-1181-000CN	Guide - For the shutter lever on the laser/scanner assembly - Mounts on the metal support bracket for the laser/scanner assembly
71	RG0-1022-000CN	Front guide assembly - Ribbed plastic piece that runs the width of the printer - Mounts to the front of the left and right side plates

**Other Internal Parts**
**Insulator**

- 72 RA0-1528-000CN Small insulating sheet (clear plastic) - Protects the formatter board from shorting out - Mounts between the formatter PC board and the mounting plate

**LED**

- 73 RG0-1167-000CN LED status panel assembly (or control panel) - Plastic front cover support with two LED's - Mounts on the upper left corner of the left side plate

**Lever**

- 74 RA0-1182-000CN Shutter lever - Spring loaded lever - Mounts to the top of the laser/scanner assembly

**Link**

- 75 RA0-1023-000CN Connecting link - Connects between the sliding linkage on the left and right side plates and the toner cartridge access door (2 used)

**Motor**

- 76 RH7-1473-000CN Stepper motor assembly - Drives all rollers and fusing assembly via the gear train on the right side plate - Mounts on the inside rear of the right side plate

**Plate**

- 77 RA0-1524-000CN Mounting plate (stamped sheet-metal plate) - For the formatter PC board - Mounts on the left side plate assembly
- 78 RG0-1001-040CN Right side plate assembly - Includes the right side plate, drive motor, most all drive gears, and cam levers - Does not come with the pick-up roller solenoid or 69 tooth gear
- 79 RG0-1002-060CN Left plate assembly - Left side of internal printer mechanism - Plate that the formatter PC board mounts to

**Shield**

- 80 Q2676-00002 RFI shield plate - Covers and protects the formatter PC board

**Spacer**

- 81 RA0-1128-000CN Printed circuit board spacer - Mounts between the print engine control board and the metal support pan (six used)

**Spring**

- 82 RA0-1169-000CN Compression spring - Provides tension for the shutter lever - Mounts between the shutter lever and the laser/scanner assembly

**Support**

- 83 RA0-1173-000CN Mounting support - Metal piece that supports the paper pick-up solenoid (SL001) - Mounts on the right side plate
- 84 RA0-1184-000CN Right side cover mounting support - Front Cover support - Mounts on the upper right corner of the right side plate

**Paper Path Parts**
**Fusing Assembly**

- 85 RG9-1494-000CN Fusing assembly - Bonds toner to paper with heat (For 220V to 240V operation) - Mounts in the upper rear of the printer

**Laser/Scanner**

- 86 RG9-1486-000CN Laser/scanner assembly - Mounts on top of the print structure frame

**Paper Pick-Up**

- 87 RG0-1003-000CN Paper pick-up assembly - Includes the pick-up roller, feed roller assembly, separation pad, plastic housing and other associated parts - Does NOT include the pickup roller

**Roller**

- 88 RF0-1008-000CN Paper Pick-up Roller ('D' shaped roller) - Picks up media from the paper input tray - Clips in the holder on the paper pick-up shaft
- RL1-0303-000CN New Part for RF0-1008-000CN*
- 89 RG9-1483-000CN Transfer roller assembly - Transfers static charge to the media being printed on - Mounts in the top rear of the paper pick-up assembly

**Paper Pick-Up Assy Parts**
**Foot**

- 90 RA0-1003-000CN Rubber foot - Used for the rear feet on the bottom of printer - Mounts on the front bottom frame of the paper pick-up assembly (two used)

**Paper Pick-Up Assy Parts****Gear Assembly**

- 91 RY7-5081-000CN Gear/clutch assembly kit - Includes 19-tooth/31-tooth double-gear body, ratcheted shaft piece and spring - For driving the paper feed roller shaft in the paper pickup assembly

**Ground Plane**

- 92 RA0-1072-000CN Grounding Plate - L-shaped, spring steel - Mounts on the left end of the paper pickup assembly

**Pad**

- 93 RF0-1014-000CN Separation pad assembly - Mounts on a spring loaded arm in the paper pick-up assembly

**Paper Pick-Up**

- 94 RG0-1003-000CN Paper pick-up assembly - Includes the pick-up roller, feed roller assembly, separation pad, plastic housing and other associated parts - Does NOT include the pickup roller

**Plate**

- 95 RG0-1006-000CN Paper lift plate assembly - Plastic plate assembly that includes the two blue paper width adjusters - Mounts to the top front of the paper pick-up assembly

**Roller**

- 96 RF0-1008-000CN Paper Pick-up Roller ('D' shaped roller) - Picks up media from the paper input tray - Clips in the holder on the paper pick-up shaft

*RL1-0303-000CN New Part for RF0-1008-000CN*

**Roller/Holder**

- 97 RG0-1005-000CN Paper feed roller assembly - Includes feed roller, feed roller base assembly, retainer bushings, paper input leading edge sensor, sensor flag and spring

**Sensor**

- 98 RG0-1072-000CN Paper sensor PC board - Small board with optical flag sensor (Flag not included) - For sensing leading edge of paper - Mounts on the paper feed assembly in the paper pick-up assembly

**Shaft**

- 99 RG0-1007-020CN Paper pick-up shaft assembly - Includes the shaft, the two cams, pick-up roller holder, and end cap - Mounts in the paper pick-up assembly

**Spring**

- 100 RA0-1035-000CN Torsion spring - Provides high voltage connection to the toner cartridge (developing cylinder) - Mounts between the paper pickup roller and the transfer roller on the left side of the paper pickup assembly
- 101 RA0-1200-000CN Torsion spring - Provides high voltage connection to the toner cartridge (primary charging roller) - Mounts behind the transfer roller on the left side of the paper pickup assembly

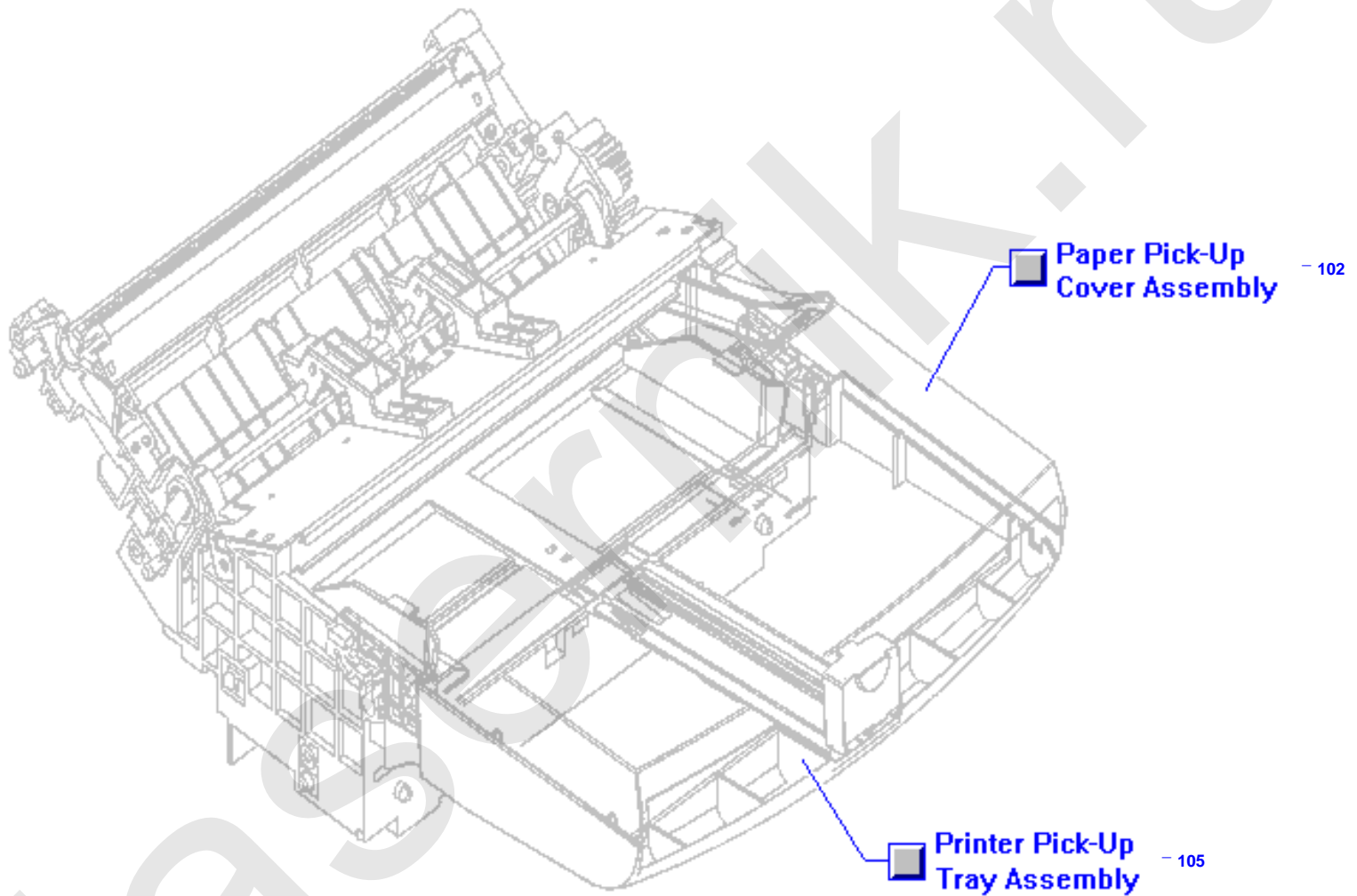
**Paper Tray Parts****Cover**

- 102 RG0-1014-000CN Paper tray cover assembly - Includes clear plastic cover with blue width adjustment guides for 'priority' paper input - Covers the LaserJet paper input tray
- 103 RG0-1016-000CN Rear cover assembly - Includes rear cover and fold down face-up (or straight through) paper output tray (Tray is NOT sold separately)
- 104 RG0-1017-020CN Top cover assembly - Has face-down paper output tray molded into it - Mounts to top of printer

**Tray**

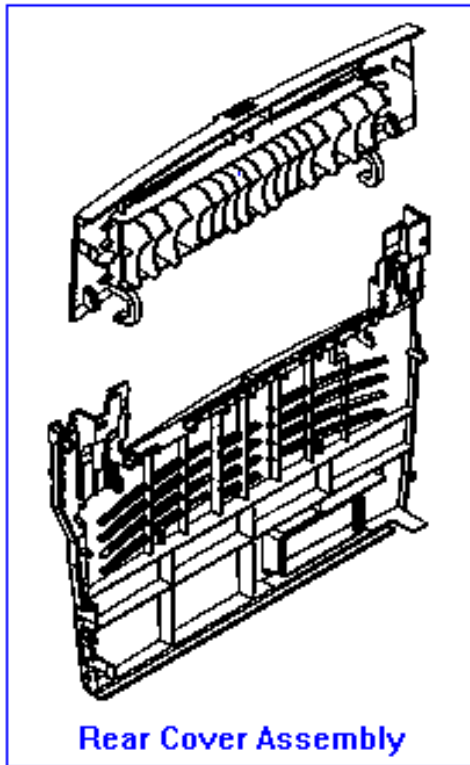
- 105 RG0-1013-000CN Printer input paper tray assembly - Includes bottom tray, blue paper length adjustment lever, and extension arm (Does NOT include the paper tray cover)

Paper Tray Parts

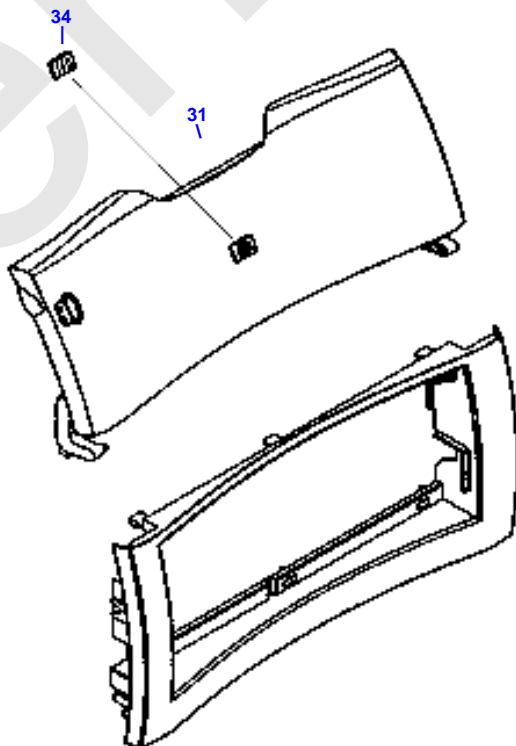
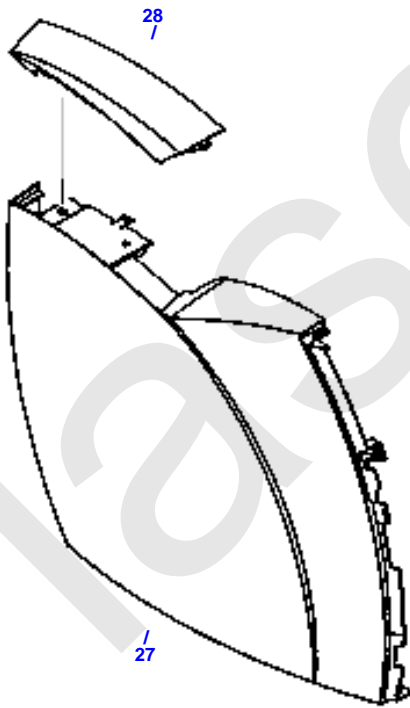
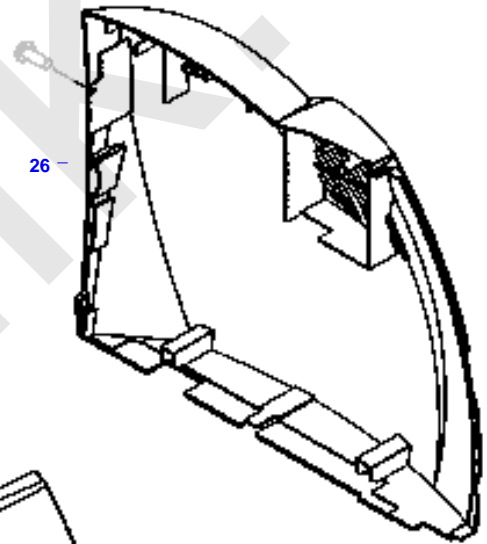
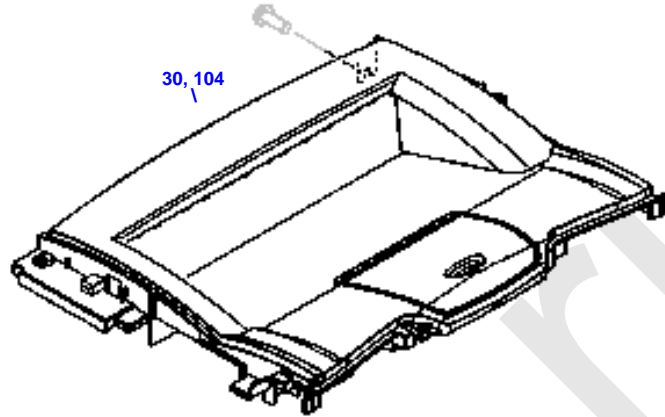




External Case Parts



29, 103

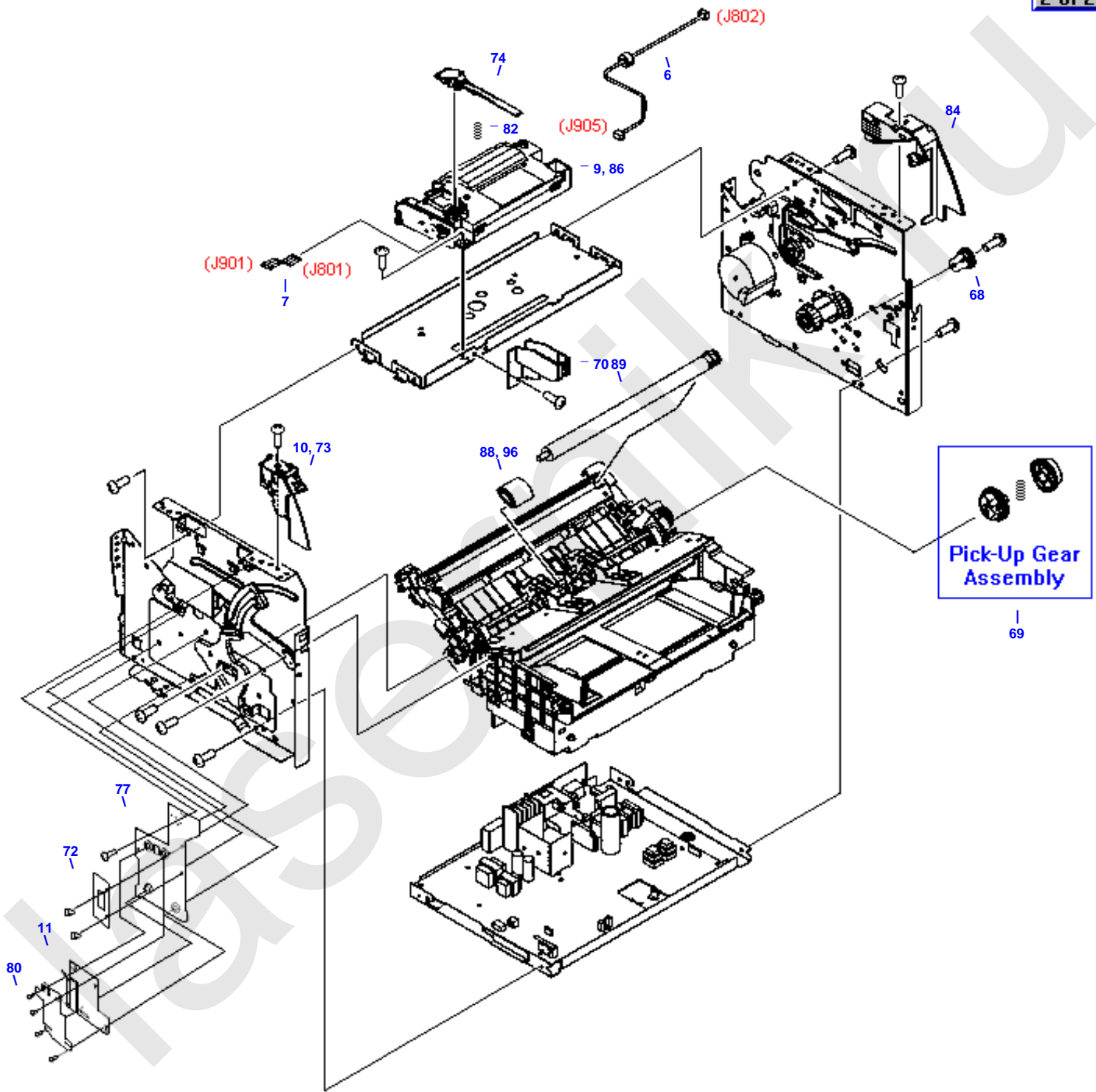




invent

Internal Components (1 of 2)

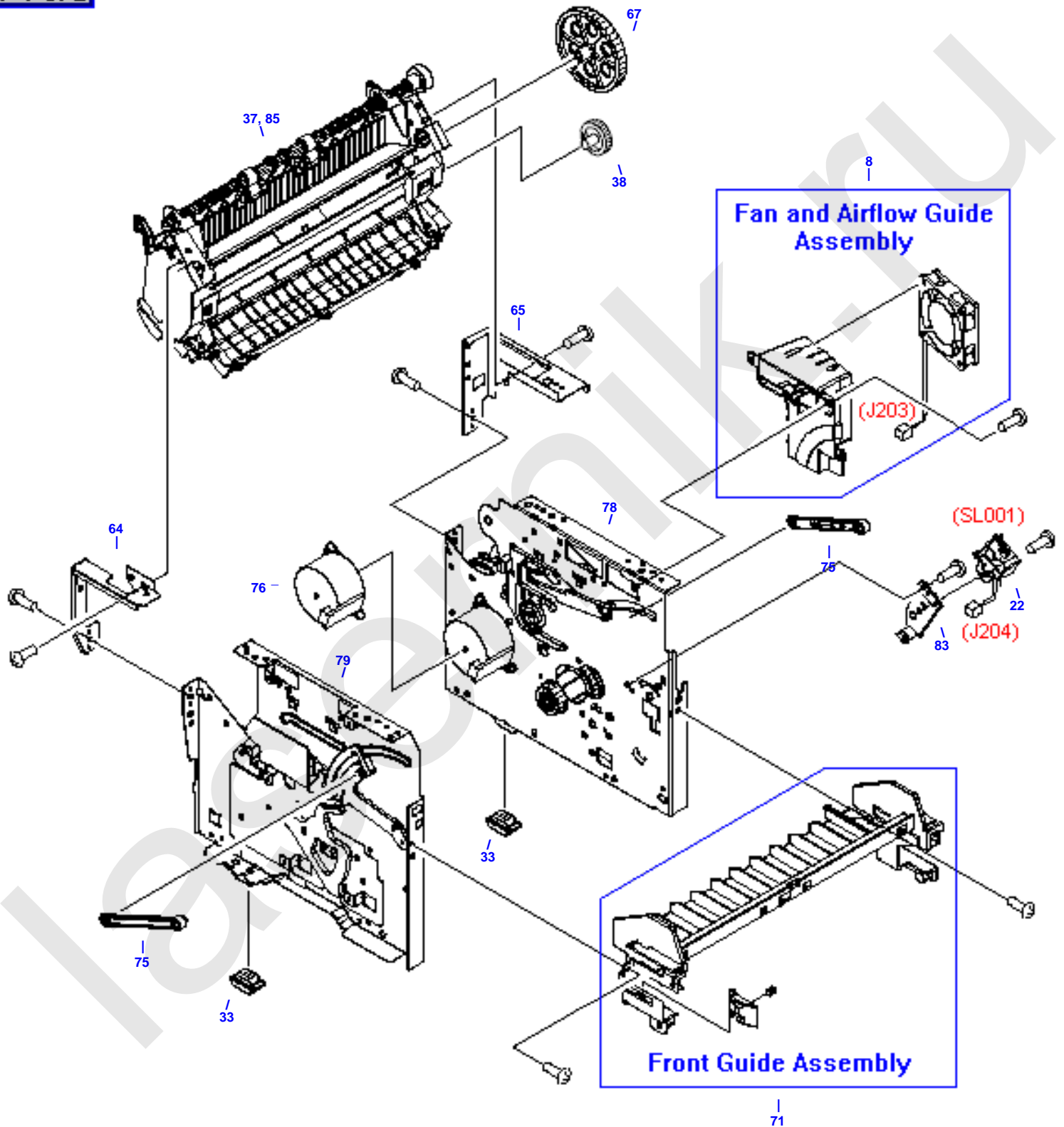
2 of 2 →







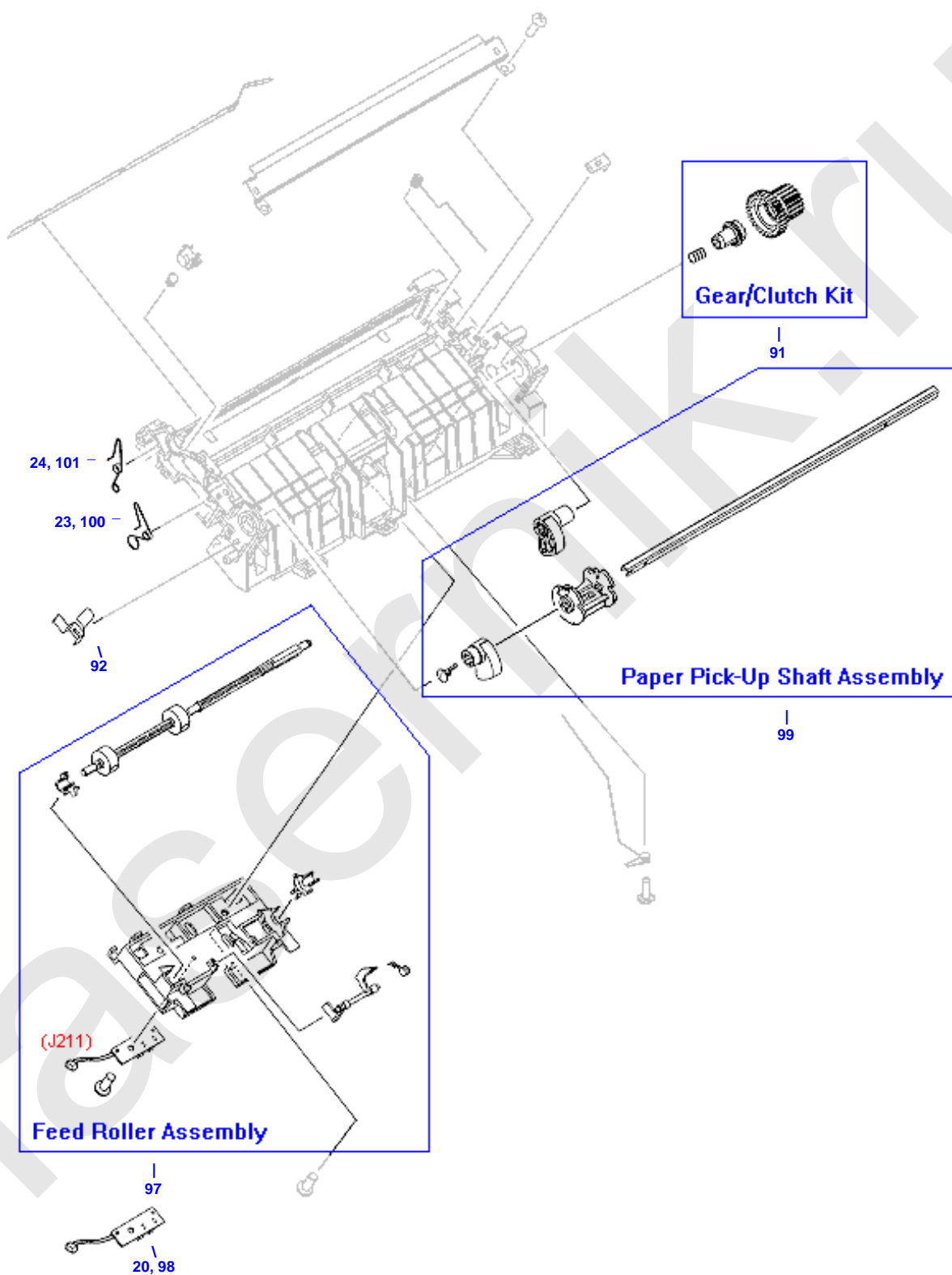
← 1 of 2



Paper Pickup Assembly (1 of 2)

 Paper Pick-Up Assembly - 87, 94

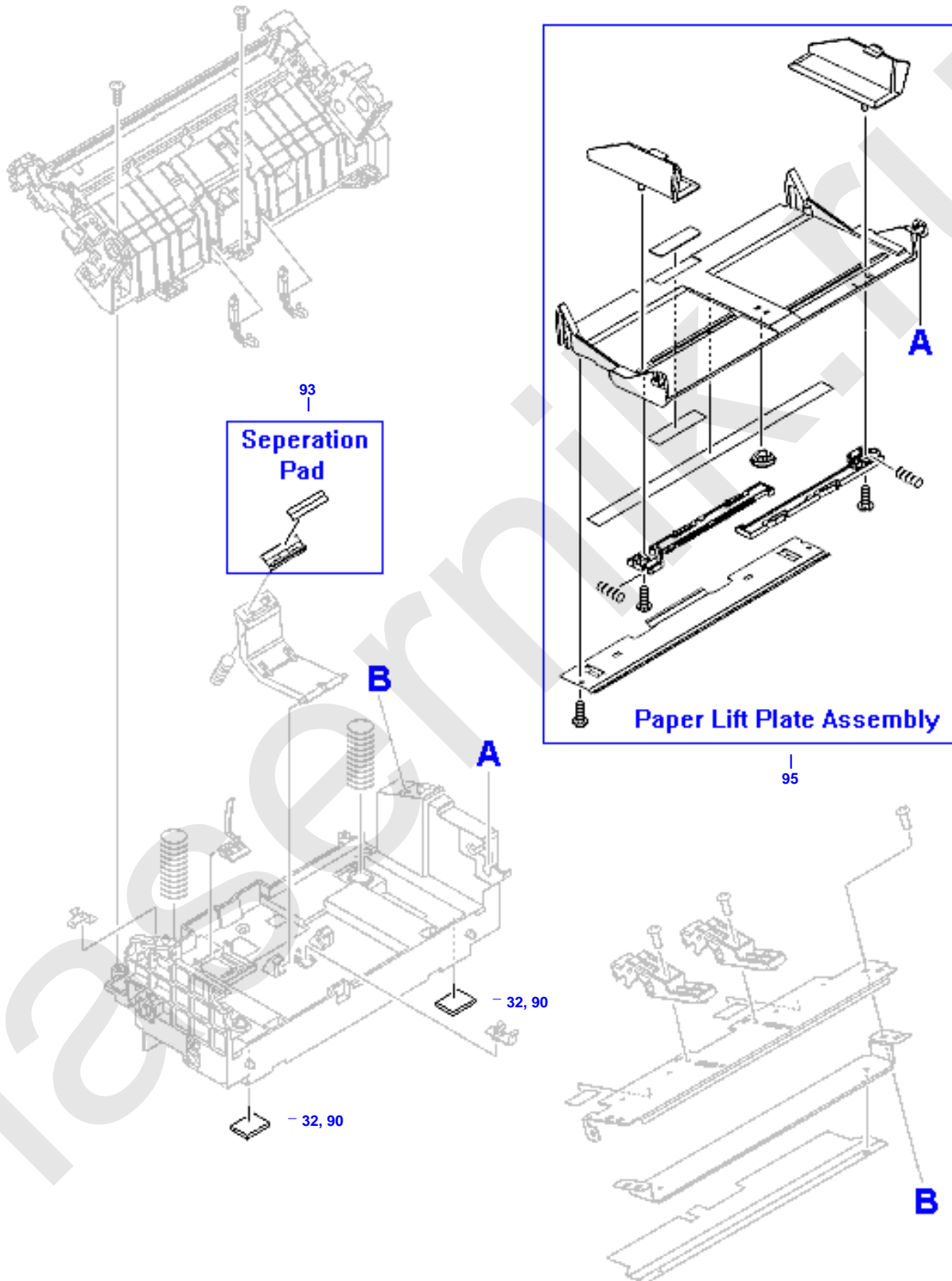
 2 of 2 →



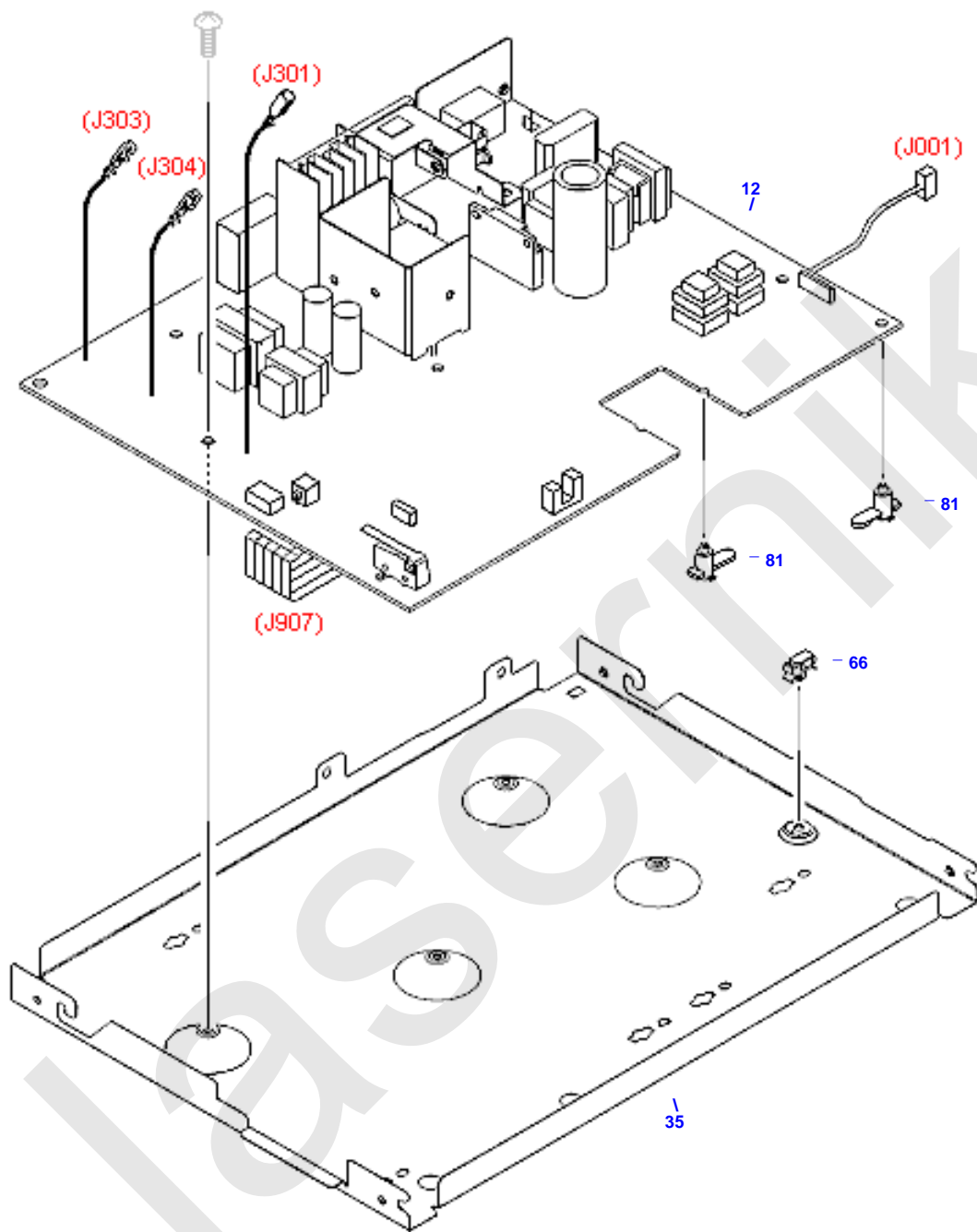
Paper Pickup Assembly (2 of 2)

← 1 of 2

■ Paper Pick-Up Assembly - 87, 94

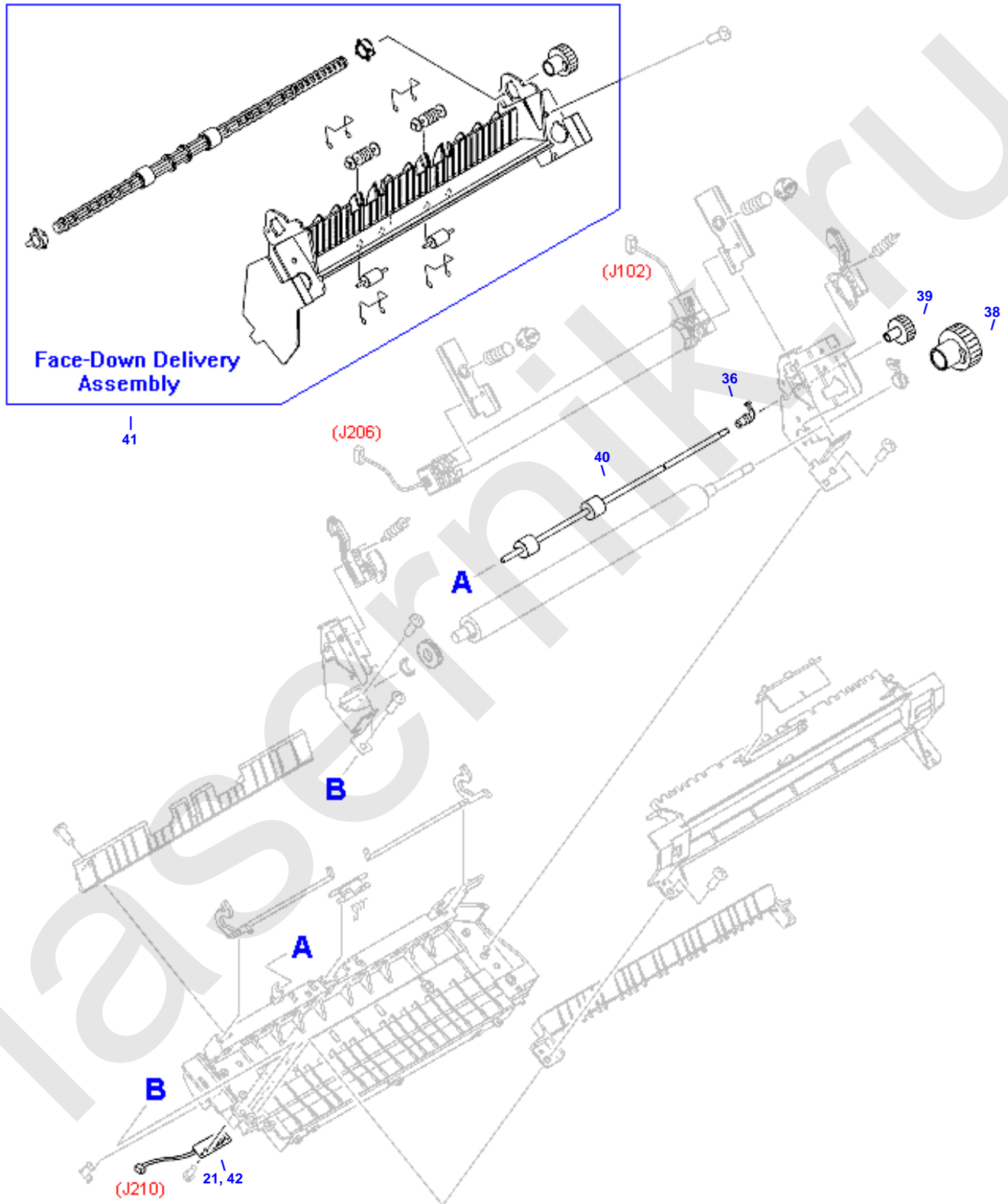


## Engine Control PC Board and Related Parts



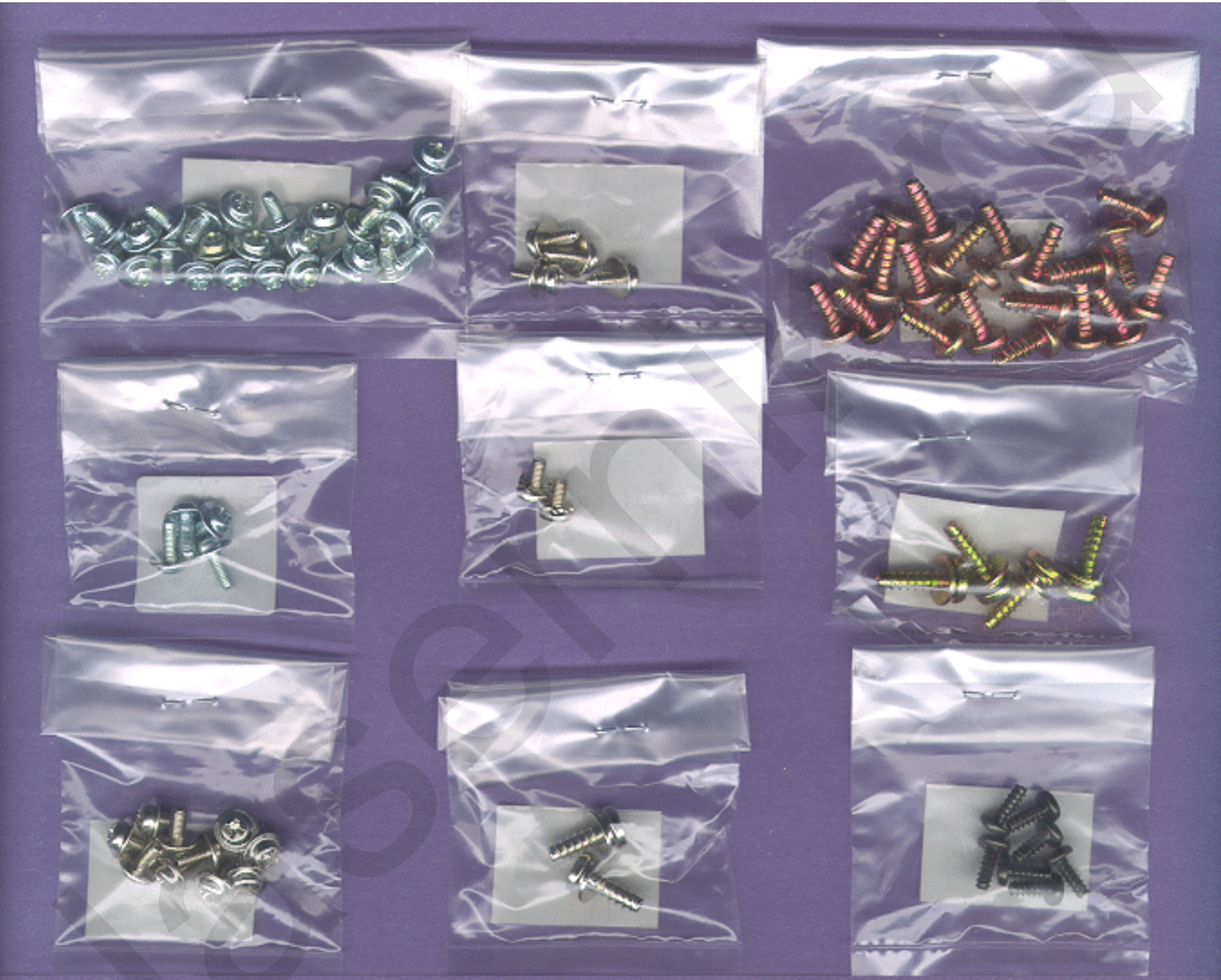
Fusing Assembly Parts

Fusing Assembly - 37, 85





## LaserJet Screw Set

 LaserJet 1005 Screw Kit - 63



**HP Parts Reference Guide**

<http://www.hp.com/go/parts>

**HP PartSurfer**

<http://partsurfer.hp.com>

**HP Parts Ordering Information**

<http://www.hp.com/go/hpparts>

**HP Parts Questions/Comments**

<http://partsurfer.hp.com/contactus.htm>

laser.nik.ru